

SINCE
1946
ABOUT
US

Founded in 1946 in Portugal, Fucoli-Somepal has been at the forefront of developing **ductile iron solutions** for water networks, wastewater, gas, telecommunications and firefighting systems.

Our strict compliance with national and international standards ensures that we offer the highest quality of products, providing safe, effective and reliable solutions to the sector's challenges, particularly in combating water loss.

With over **6,000 products references for the water sector**, we offer a wide range of products that deliver quality, innovation and technical expertise tailored to your specific needs.

Fucoli-Somepal products are **100% made in Portugal**, and we guarantee total control over the production process. We are committed to improving our technological processes, reducing our carbon and water footprints, using natural resources efficiently, and investing in the development and well-being of our employees.

Promoting a more sustainable future involves implementing **sustainable business practices**. We use ductile cast iron that is 100% recyclable at the end of its long service life, ensuring high-quality solutions that promote a sustainable future.

 **100%
MADE IN
PORTUGAL**

At Fucoli-Somepal, we are committed to preserving our planet's precious natural resources.

Through **innovation** and dedication, we strive to minimise our **carbon and water footprints**, ensuring a more sustainable future for generations to come.

Our ductile iron solutions not only meet industry standards but also incorporate eco-conscious practices, reflecting our ongoing commitment to **environmental sustainability**.

Join us in creating a greener tomorrow!



Fucoli-Somepal
FUNDIÇÃO DE FERRO, S.A.

DESDE
SINCE **1946**

DUCTILE IRON SOLUTIONS

 **100% PRODUCED IN PORTUGAL
FROM START TO FINISH**



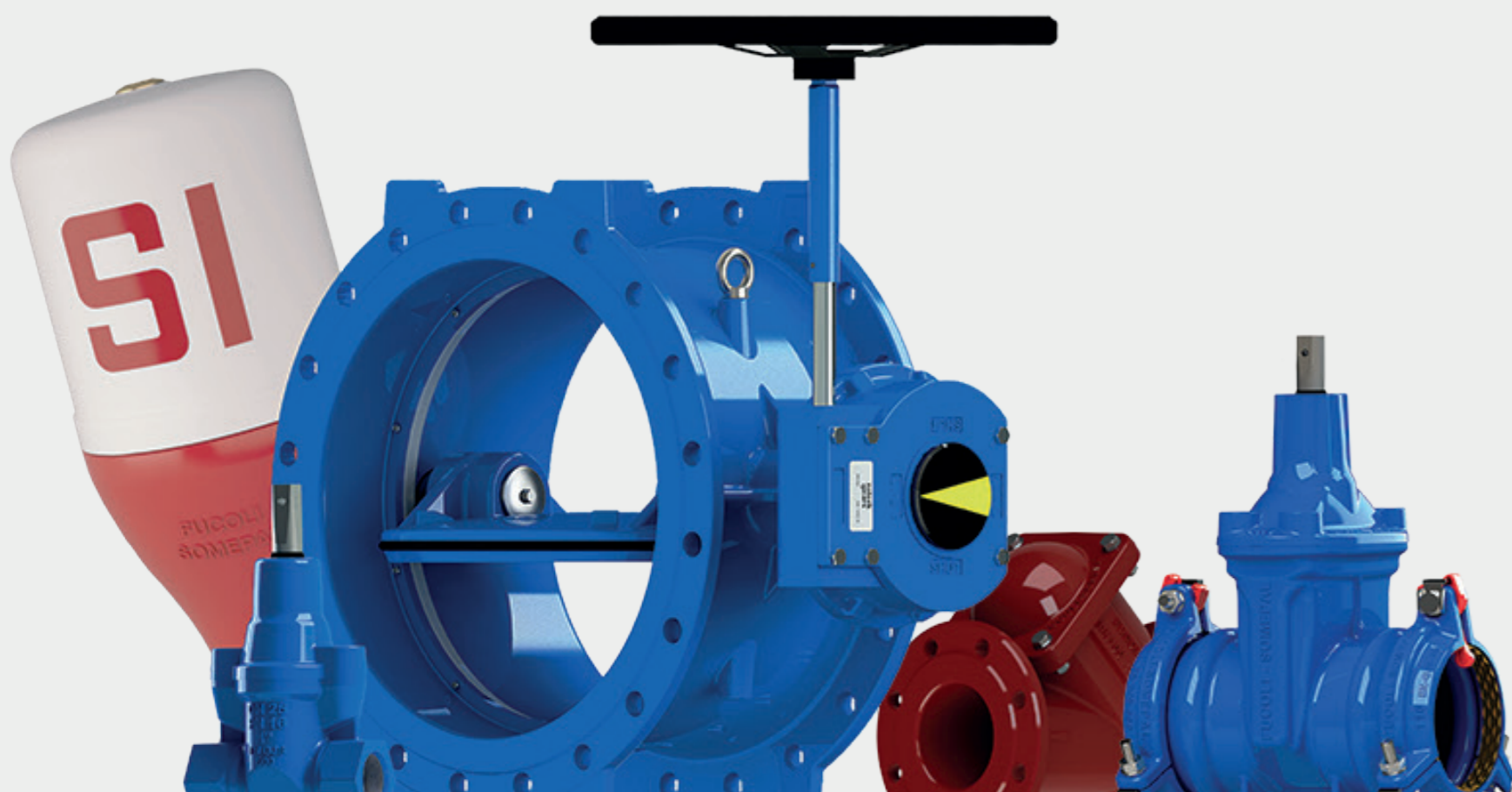
SCAN TO EXPLORE OUR SOLUTIONS:



WWW.FUCOLI-SOMEPAL.PT

E-mail: comercial@fucoli-somepal.pt

Tel: +351 239 490 100



OUR

5 SOLUTION AREAS



Fucoli-Somepal
FUNDAÇÃO DE FERRO, S.A.

DESDE
SINCE 1946

OUR

5 COMPANY VALUES



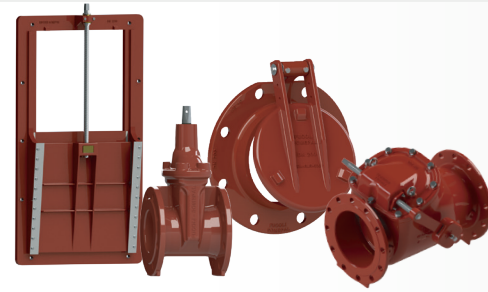
POTABLE WATER



With our comprehensive range of products, including valves, hydrants, fittings and couplings, we offer versatile solutions for **water transmission and distribution networks**. We have complete control over the manufacturing process and facility, including GSK-certified epoxy coating, guaranteeing maximum reliability, durability and safety.



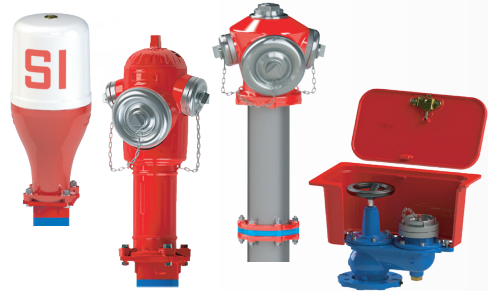
RESIDUAL / WASTEWATER



At Fucoli-Somepal, we pride ourselves on providing durable and long-lasting ductile iron products for **wastewater applications**. Our expertly engineering solutions are designed to perform exceptionally well, even in the most challenging conditions.



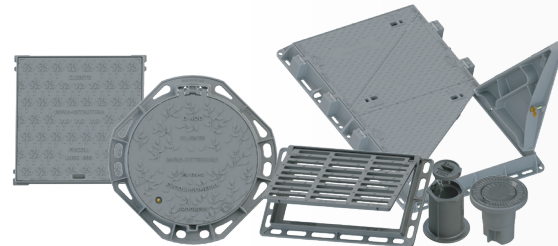
FIRE FIGHTING



Our above-ground and underground hydrants have been engineered to meet the **demands of firefighting applications**, ensuring that every second counts when it matters most. All our hydrants comply with international standards, so you can trust that our fire suppression systems prioritise efficiency and safety.



MANHOLE COVERS & GULLY GRATES



Our **ductile cast iron manhole covers and grates** are designed to meet and exceed the highest standards of durability, safety and security, as well as the requirements of our clients, specifiers, installers and operators. They are designed to deliver tangible benefits that significantly reduce overall costs.



GAS



Fucoli-Somepal ensures the safety and reliability in **gas distribution systems** with rigorous quality control processes. All ductile iron valves are manufactured and tested in our advanced facilities to meet the highest safety standards to safeguard traceability, durability and operational reliability.



QUALITY & RELIABILITY

We consistently deliver dependable, high-performance solutions by applying rigorous quality control at every stage. Our fully integrated approach ensures durability, safety, and complete traceability, earning our customers' trust with every product.



SUSTAINABLE SOLUTIONS

Our solutions are designed to minimise environmental impact and maximise efficiency. We use up to 90% steel scrap in our production, giving new life to old materials and supporting responsible resource management.



CUSTOMER SERVICE

Long-lasting relationships are built by going above and beyond to meet customer needs and expectations. Our unwavering commitment builds trust, fosters satisfaction, and delivers value beyond our products.



CONTINUOUS INNOVATION

We champion progress through continuous improvement of our products and processes, anticipating industry trends and enabling our customers to succeed in a rapidly evolving market.



VERTICAL INTEGRATION

Our end-to-end production — from design to quality control at our two facilities in **Portugal** — ensures complete oversight, consistent excellence, and true independence from outsourced manufacturing.